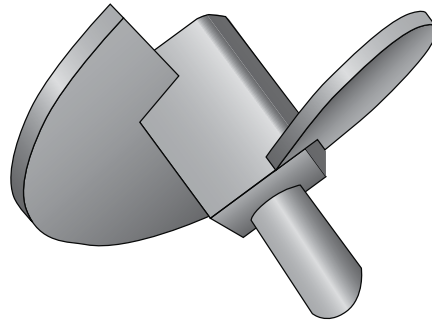


TAX-250-625 (12) -- Torque Anchor Extreme Helix



Product Specifications	
Anchor Style	Power Installed Torque Anchor
Number of Helices	1
Single Helix	12" (305 mm) x 3/8" (9.52mm)
Rod Diameter	5/8" (15.9 mm)
Torque Rating	15,000 ft lbs (20,340 N-M)
Square Hub	2.5" (63.5 mm)
Coating	Painted (optional Hot-Dip Galvanized)
Standard Package	2 per Box 48 per PLT
Standard Package Unit	Each
Min Order Qty	1
Weight/Ea	17 lbs

Notes

Torque Anchor Extreme Helix; 15,000 ft lbs (20,340 N-M), 12" (305 mm) x 3/8" (9.52mm) Helix for use with 5/8" (15.9 mm) rod