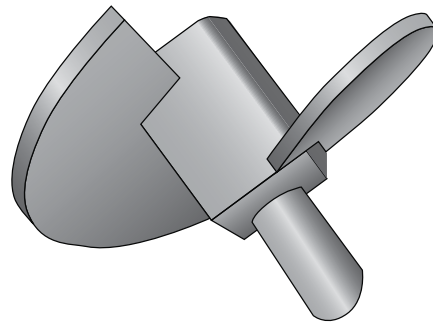


TAX-225-625 (10) -- Torque Anchor Extreme Helix



| Product Specifications | |
|-------------------------------|---------------------------------------|
| Anchor Style | Power Installed Torque Anchor |
| Number of Helices | 1 |
| Single Helix | 10" (254 mm) x 3/8" (9.52mm) |
| Rod Diameter | 5/8" (15.9 mm) |
| Torque Rating | 10,000 ft lbs (13,558 N-M) |
| Square Hub | 2.25" (57.2 mm) |
| Coating | Painted (optional Hot-Dip Galvanized) |
| Standard Package | 4 per Box 96 per PLT |
| Standard Package Unit | Each |
| Min Order Qty | 1 |
| Weight/Ea | 13 lbs |

Notes

Torque Anchor Extreme Helix; 10,000 ft lbs (13,558 N-M), 10" (254 mm) x 3/8" (9.52) Helix for use with 5/8" (15.9 mm) rod