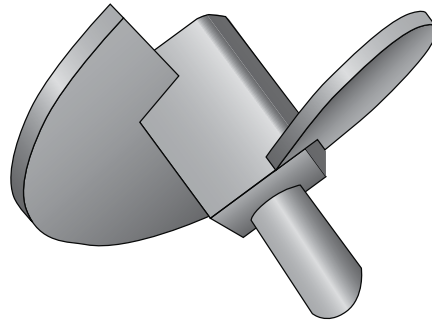


TAX-225-100 (12) -- Torque Anchor Extreme Helix



Product Specifications	
Anchor Style	Power Installed Torque Anchor
Number of Helices	1
Single Helix	12" (305 mm) x 3/8" (9.52mm)
Rod Diameter	3/4" (19.1 mm) or 1" (25.4 mm)
Torque Rating	10,000 ft lbs
Square Hub	2.25" (57.2 mm)
Coating	Painted (optional Hot-Dip Galvanized)
Standard Package	2 per Box 48 per PLT
Standard Package Unit	1
Min Order Qty	16 lbs
Weight/Ea	

Notes

Torque Anchor Extreme Helix; 10,000 ft lbs (13,558 N-M), 12" (305 mm) Helix for use with 3/4" (19.1 mm) or 1" (25.4 mm) rod