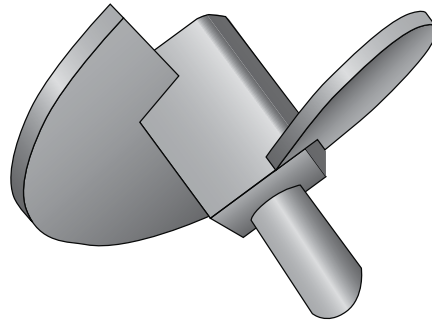


**TAX-225-100 (10) -- Torque Anchor Extreme Helix**



<b>Product Specifications</b>	
Anchor Style	Power Installed Torque Anchor
Number of Helices	1
Single Helix	10" (254 mm)
Rod Diameter	3/4" (19.1 mm) or 1" (25.4 mm) rod
Torque Rating	10,000 ft lbs
Square Hub	2.25" (57.2 mm)
Coating	Painted (optional Hot-Dip Galvanized)
Standard Package	4 per Box 96 per PLT
Standard Package Unit	Each
Min Order Qty	1
Weight/Ea	13 lbs

**Notes**

Torque Anchor Extreme Helix; 10,000 ft lbs (13,558 N-M), 10" (254 mm) Helix for use with 3/4" (19.1 mm) or 1" (25.4 mm) rod